



NO PRE- WASHING CONCEPT™

GRANULDISK® 



THE POT WASHING EXPERT.

"We shall offer the most beneficial solution for our customer groups and business partners, ensuring economic and environmental sustainability as well as top hygiene quality throughout the ware washing process."

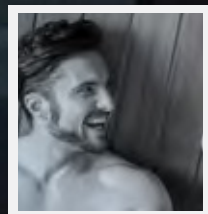
GRANULDISK is privately owned and based in Malmö, Sweden and has been active in the pot washing industry since 1987.

We build long-term, safe, responsible and smart pot washing solutions for commercial kitchen operations worldwide. GRANULDISK has been a market leader in the Granule pot washing segment for many years.

GRANULDISK has R&D, production and sales in-house, where we can monitor the processes and ensure top quality

in everything we do. To reach our customers and maintain a strong presence across the globe, we work closely with a wide network of trained and certified partners.

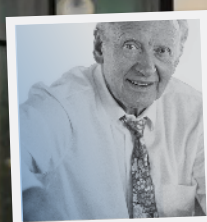
As a manufacturer we strongly believe in running a responsible and sustainable business and continuously working to minimise our carbon footprint. This is why we annually compensate for the CO₂ emissions caused by our production and transportation processes, by donating to projects that work to protect and restore rainforests.



1970s



1977



1987

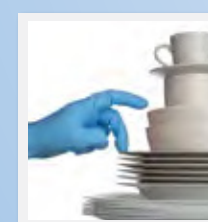
Did you know that the idea of Granule pot washing was born in a sauna?

First patent registered.

It was one man's early departure from a group of friends, meeting for their weekly sauna session in a hotel in the outskirts of Malmö, that triggered the mind of an inventor and an idea began to form.

Gunnar SANDBERG acquired the concept and founded the company GRANULDISK within GS Development AB (today SANDBERG DEVELOPMENT AB). Shortly after, the concept started to capture attention in the commercial kitchen industry.

GRANULDISK HQ with R&D, production and sales in Malmö, Sweden.



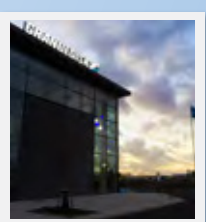
2007

GRANULDISK launched the world's first combined Granule pot washer and dishwasher - Granule Combij®.



2012

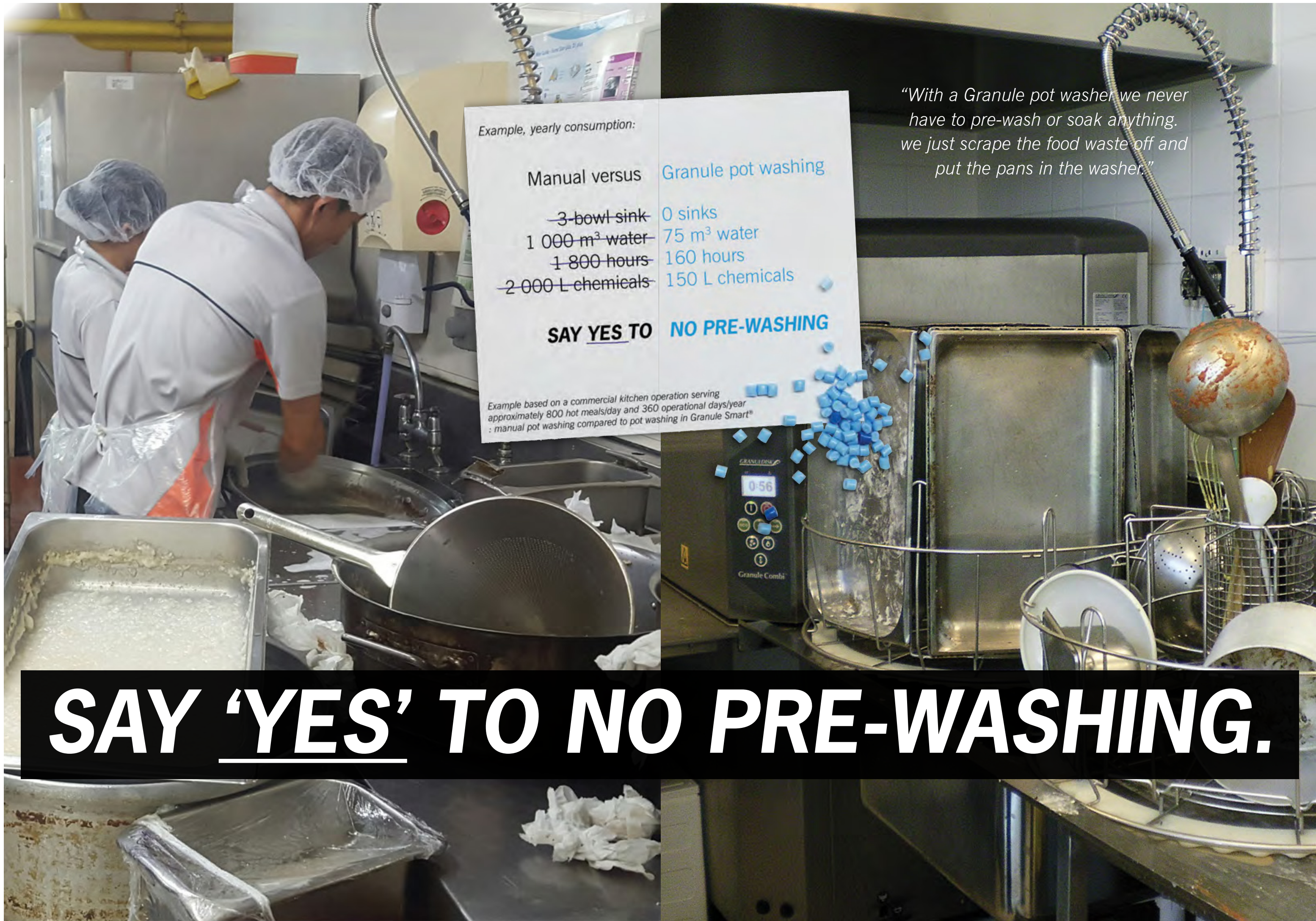
The introduction of Granule Smart® expanded the GRANULDISK® range further, making it the broadest range in the market. This new, stand-alone and low-height solution paved the way for even more segments to choose Granule pot washing over traditional methods.



2015

"We can see the world from here".

GRANULDISK moved into a new factory and HQ, fully geared to further plans for greater expansion. We chose to stay in Sweden to stay in control of our production process and secure the quality in both our products and our services to our customers.



SMARTER, FASTER, STRONGER.

SMART, SUSTAINABLE AND ECONOMIC POT WASHING THAT ELIMINATES SOAKING, SCRUBBING & PRE-WASHING.



SAVE WATER, CHEMICALS & ENERGY WITH THE NO PRE-WASHING CONCEPT™

GRANULDISK® pot washers use PowerGranules®, high-pressure water and a small amount of detergent to mechanically scrub pots and pans clean.

The blasting power is combined with high temperatures and washes hygienically clean in a matter of minutes, using up to 90% less water, energy and chemicals than any other pot washing method.



IMPROVED WORKING CONDITIONS.

With pre-washing eliminated, the pot washing staff will run much less risk of coming into contact with burning hot water and harsh chemicals.

What's more, they won't have to spend hours bent over steaming sinks, manually scrubbing pots and pans - something that can lead to strain on the back and shoulders and cause work-related injuries.

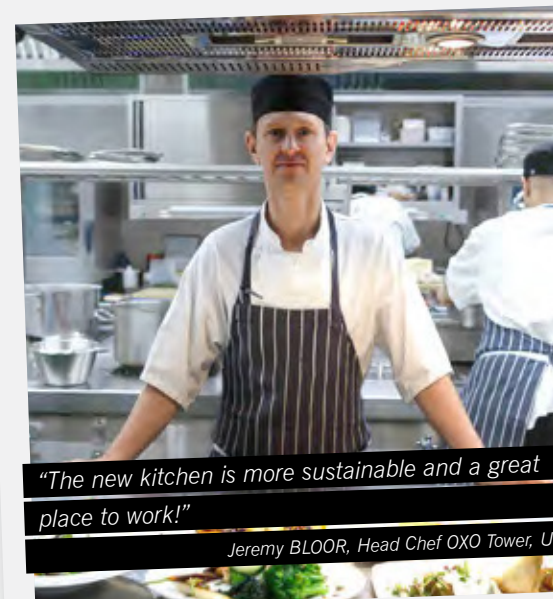


FOOD SAFETY.

GRANULDISK follows strict hygiene guidelines and recommendations, drawn up by industry officials such as DIN and NSF, in order to secure hygienically clean pots, pans and utensils. With safe utensils you can ensure food safety from the very start of the production line.

After the PowerGranules® have done their job scrubbing the pans clean, an optimised final rinse cycle guarantees a hygienically secure wash result.

To help you in your day-to-day work with HACCP, GRANULDISK® pot washers enable the easy export of wash data through built-in USB port.



"The new kitchen is more sustainable and a great place to work!"

Jeremy BLOOR, Head Chef OXO Tower, UK



"We couldn't cope without it. The pot wash pretty much handles itself."

Sabina TUCIC, Kitchen Manager, Åby school, Sweden

WHAT CAN THE NO PRE-WASHING CONCEPT™ DO FOR YOU?

Contact us for a personal Business Evaluation of your potential savings with a GRANULDISK pot wash solution.



WASH IT LIVE!

Book your Live Wash online on
www.granuldisk.com/livewash

HIGH CAPACITY, LOW CONSUMPTION.

Granule Technology™ is a sustainable alternative to traditional pot washing methods, as it uses the mechanical cleaning force of PowerGranules® mixed with high-pressure water instead of just water and chemicals. It's so efficient that it eliminates otherwise necessary steps such as soaking and pre-washing and uses much less water to get things clean, which leads to a much lower consumption of water, energy and chemicals. Moreover, one batch of PowerGranules® lasts long enough to clean up to 20.000 GN 1/1 pans.



MORE DONE IN LESS TIME.

The speed of Granule pot washing is incomparable to the speed of a regular water-based pot washer, chemical soakers and, of course, washing pots by hand. By letting PowerGranules® and high-pressure water work together, pans can go from dirty to clean in 2 minutes - no pre-washing needed. Just scrape off any leftover food and load into the pot washer.



LESS SPACE, MORE ROOM.

The size of our pot washers might not differ much from other brands, but the secret lies in what the pot washer allows you to take away, and not its actual size of the machine. With pre-washing out of the picture you can say bye-bye to rows and rows of soaking sinks. GRANULDISK® pot washers also load washware in multiple levels - something we like to refer to as 'vertical washing', as opposed to horizontal washing, which is the case in e.g. a tunnel machine. Another positive side effect is that with your pots and pans back in production quicker, you won't need as many pans and in turn can cut back on storage space.



YOUR NEEDS, OUR SOLUTIONS.

SWEDISH INNOVATION AND QUALITY BROUGHT TO YOU IN THE WORLD'S LARGEST RANGE OF GRANULE POT WASHERS.

GRANULDISK offers the largest range of Granule pot washers in the world and there is a solution to fit every operation. A wide range of accessories allows you to further customise your pot wash setup for an even better fit - what are your wants and needs?

(Meals per day is an indication of capacity, but will not determine your perfect fit. For your best match, several other parameters need to be considered - such as majority type of wash ware - GN or other - peak hour intervals, etc. Consult GRANULDISK or one of our skilled partners for a free Business Evaluation, Site survey and suggestion of best GRANULDISK pot washer for your operation.)



GRANULE FLEXI®

50 - 500 meals/day

GRANULE SMART®

300 - 1000 meals/day

GRANULE MAXI®

500 - 3000 meals/day



GRANULE GASTRO®

500 - 1000 meals/day

GRANULE COMBI®

All-in-One Edition: 50 - 300 meals/day
Dishwashing Support Edition: 50 - 1000 meals/day

SUSTAINABILITY + USABILITY.

EcoExchanger® is a perfect example of how sustainability and user experience goes hand-in-hand. The heat recovery feature recycles the heat energy from the previous cycle and at the same time improves the user experience by substantially reducing the amount of steam let out into the wash room. EcoExchanger® is available as an optional add-on for our Granule Smart® and Granule Maxi® models.

A UNIQUE SPRAY PATTERN FOR MORE EFFICIENT CLEANING.

During a wash cycle, Granules and/or high-pressure water is pushed up the wash arms, where pressure builds up.

The patented design of the wash nozzles creates a fan-shaped blade of PowerGranules® and/or high-pressure water, which efficiently removes off food scraps - no pre-washing needed.

The nozzles are strategically placed in each pot wash model, to cover every crease and bend of the wares loaded in baskets and inserts.

Every wash cycle is completed by a final rinse cycle, securing hygienically clean wares.

STRONG AND POWERFUL.

The powerful pumps are needed to create high pressure, allowing GRANULDISK pot washers to wash clean faster and with less water, energy and chemicals than other pot washing methods. The interior and parts are predominantly made using recyclable materials, with over 70% made of stainless steel.

PATENTED INNOVATIONS.

GRANULDISK is the market leader and works continuously to find new ways to improve and facilitate pot washing. Our best ideas are of course patented and two examples of this are the Granule valve, which keeps the PowerGranules® locked away safe when not in use and the wash basket sensor in our Granule Combi® model, which automatically detects which type of basket is loaded into the pot washer and selects the appropriate wash mode for you, to avoid accidentally using PowerGranules® on e.g. cups and plates.

EASY TO USE: 2 WASH MODES, 3 WASH PROGRAMMES.

GRANULDISK® pot washers feature three programme lengths - ECO, Short and Normal - and two wash modes: Granule mode and high-pressure water mode. No pre-washing needed.

Granule mode efficiently removes even baked or dried-on food scraps from items made of stainless steel, such as containers, pots and pans, oven sheets, grids, dough blenders etc.

High-pressure water mode suits lightly soiled or more sensitive wares and utensils, such as cutting boards, plastic containers, perforated or surface-treated items like Teflon® ware.

HACCP AUTOMATION.

Computer-controlled wash and rinse water temperatures secures hygienically safe wares.

HACCP wash data logs can be read from the operating panel or exported through the built-in USB port.



GRANULDISK® AROUND THE WORLD.



GRANULDISK HQ



GRANULDISK Subsidiary or Sales office



DID YOU KNOW? GRANULDISK has been multiply awarded across the world for the sustainable characteristics of the Granule Technology™. Among our most recent awards are the Heavy Water/Energy Saving Award (HOFEX, Hong Kong), the Best Sustainable Catering Equipment Innovation Award (Gulfood, Dubai) and the FCSI/CESA UK Sustainable Catering Equipment Award.

**EVERY YEAR, GRANULDISK®
CUSTOMERS TOGETHER SAVE:**

the equivalent to...

- 44 million bath tubs of water
- 88 000 bath tubs of chemicals
- energy enough to heat approx.
12 300 homes for a year

How much did you save?



NEED TO SEE IT TO BELIEVE IT?

WASH THEM LIVE.

Book your Live Wash™ today on
www.granuldisk.com/livewash

* Calculations are an example based on an average customer using a Granule Smart® pot washer compared to a manual pot washing setup, 7-800 meals/day 365 days/year.
Daily saving/pot washer: 2000 litres water, 70 kWh, 4 litres chemicals. Standard bath tub ~ 200 litres. Central heating for Northern European standard house = 25 000 kWh/home.



WE LOVE HAPPY CUSTOMERS.

Are you ready to see what the Granule Technology™ can do for you?

Trying new things and making your mind up about them often means you need to see them with your own eyes. That's why we organise free Live Wash™ demonstrations where you get first hand experience and can learn more and see how it works. Only then will you experience the true efficiency of our Granule Technology™ and can become one of our happy customers.

Book your Live Wash™ or contact us online
or catch us at the next exhibition near you.



GRANULDISK®



GRANULDISK, Jägershillgatan 13, SE-213 75 MALMÖ Tel. +46 40 671 50 60 info@granuldisk.com www.granuldisk.com
GRANULDISK AB is certified according to ISO 9001 Quality Management System and ISO 14001 Environmental Management System.